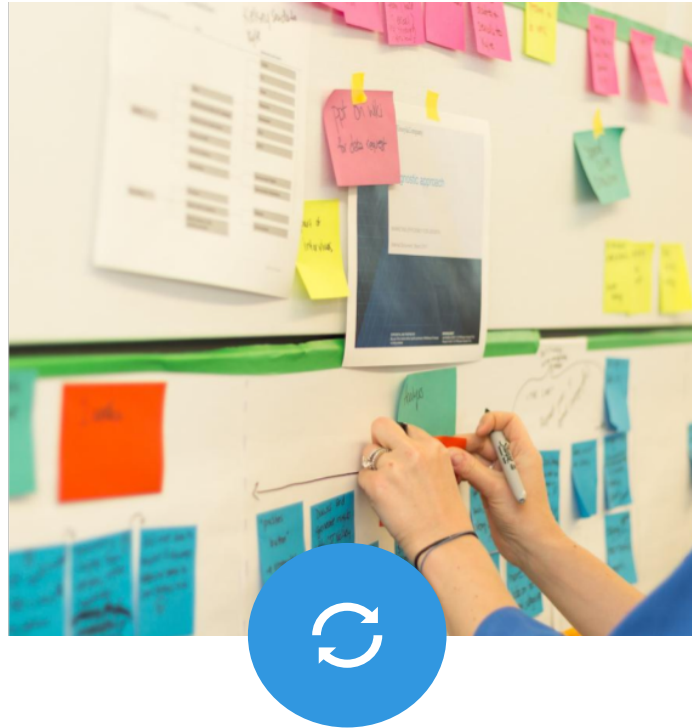


# Quarterly Stakeholder Meeting | Oct. 2017

Case Management Updates & Research Insights

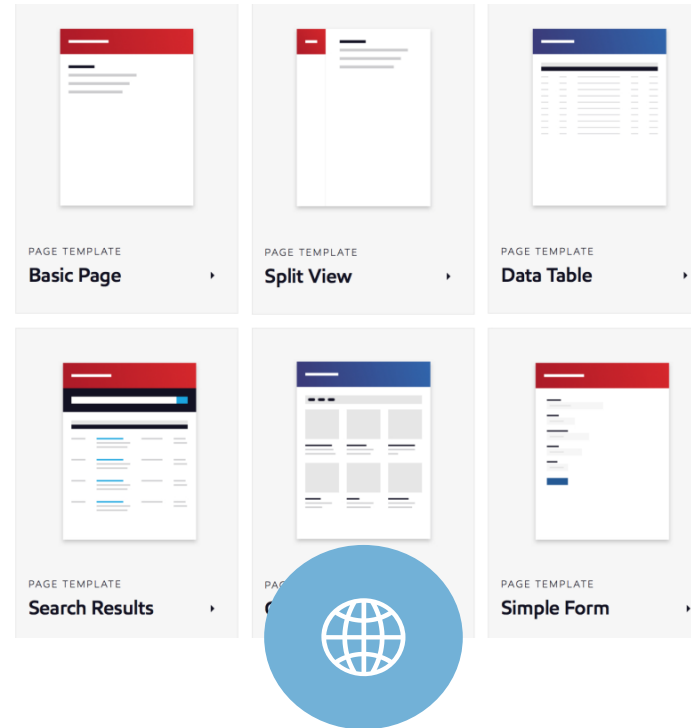


CWDS / Child Welfare Digital Services



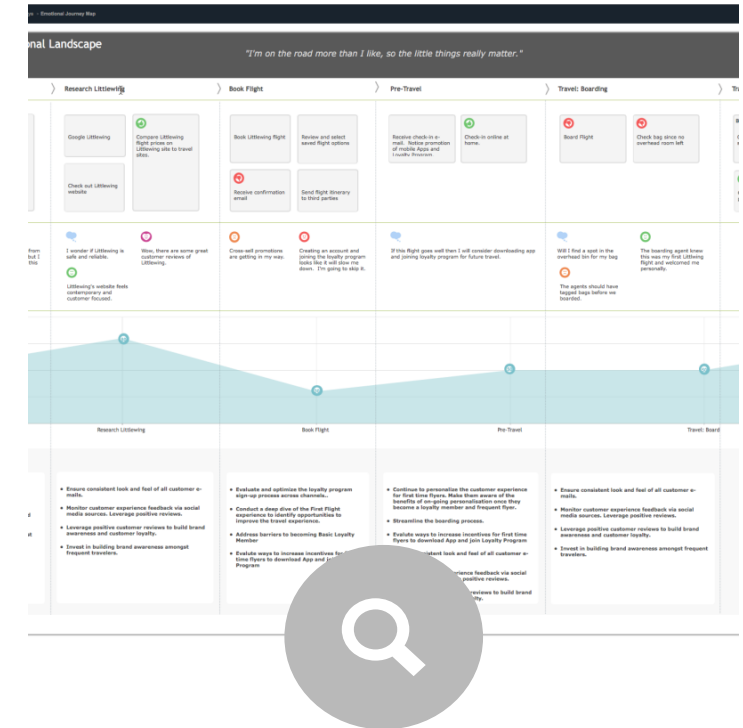
## Research & Prototype

Co-Design with our core counties on new Emergency Placement and Family Finding capabilities in support of RFA



## Pattern Library

Create a library of reusable, modular code components so that when we build interface screens they will all have the same look and feel across all digital services.



## Legacy Systems Map

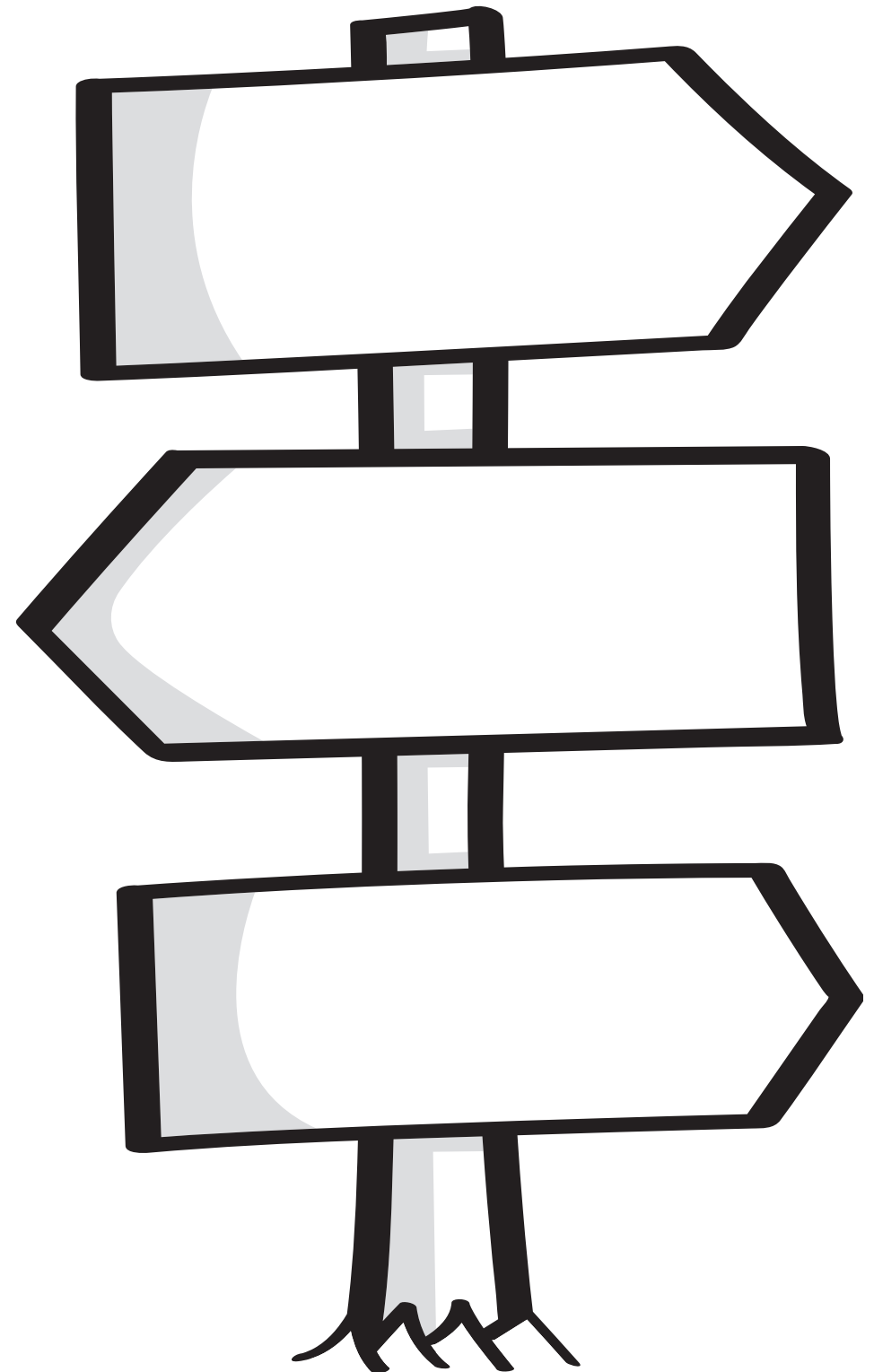
Understand data requirements and restrictions in CWS-CMS to ensure front end features support smart back end development once our TPT team joins the project



# Case Management | Research Journey

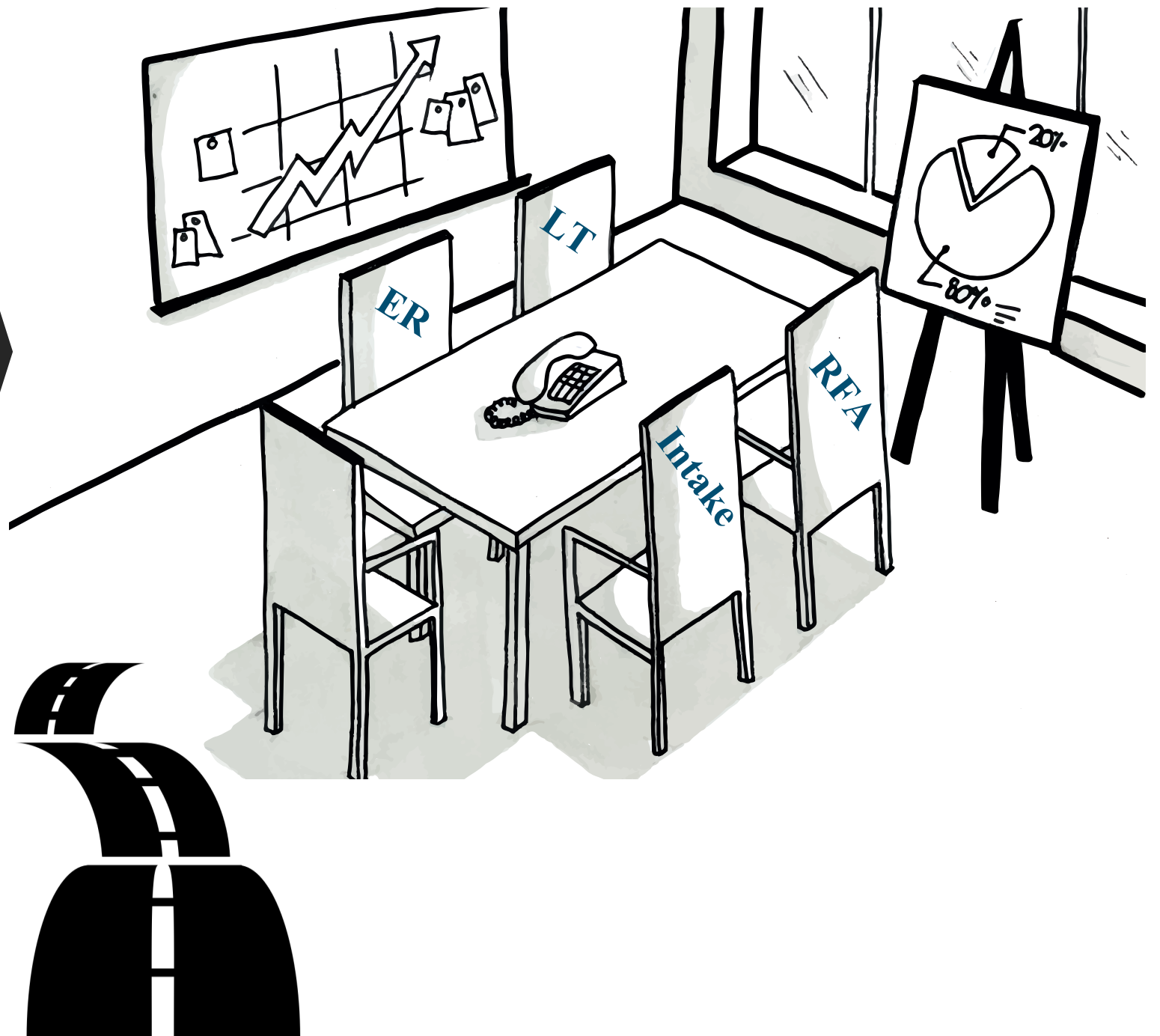
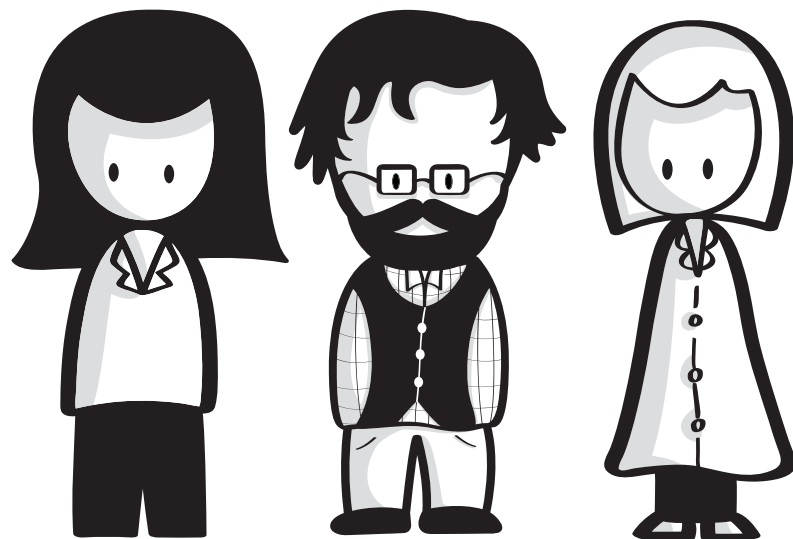
## OUR PERSPECTIVE

You have to know where you are...  
to know where you're going



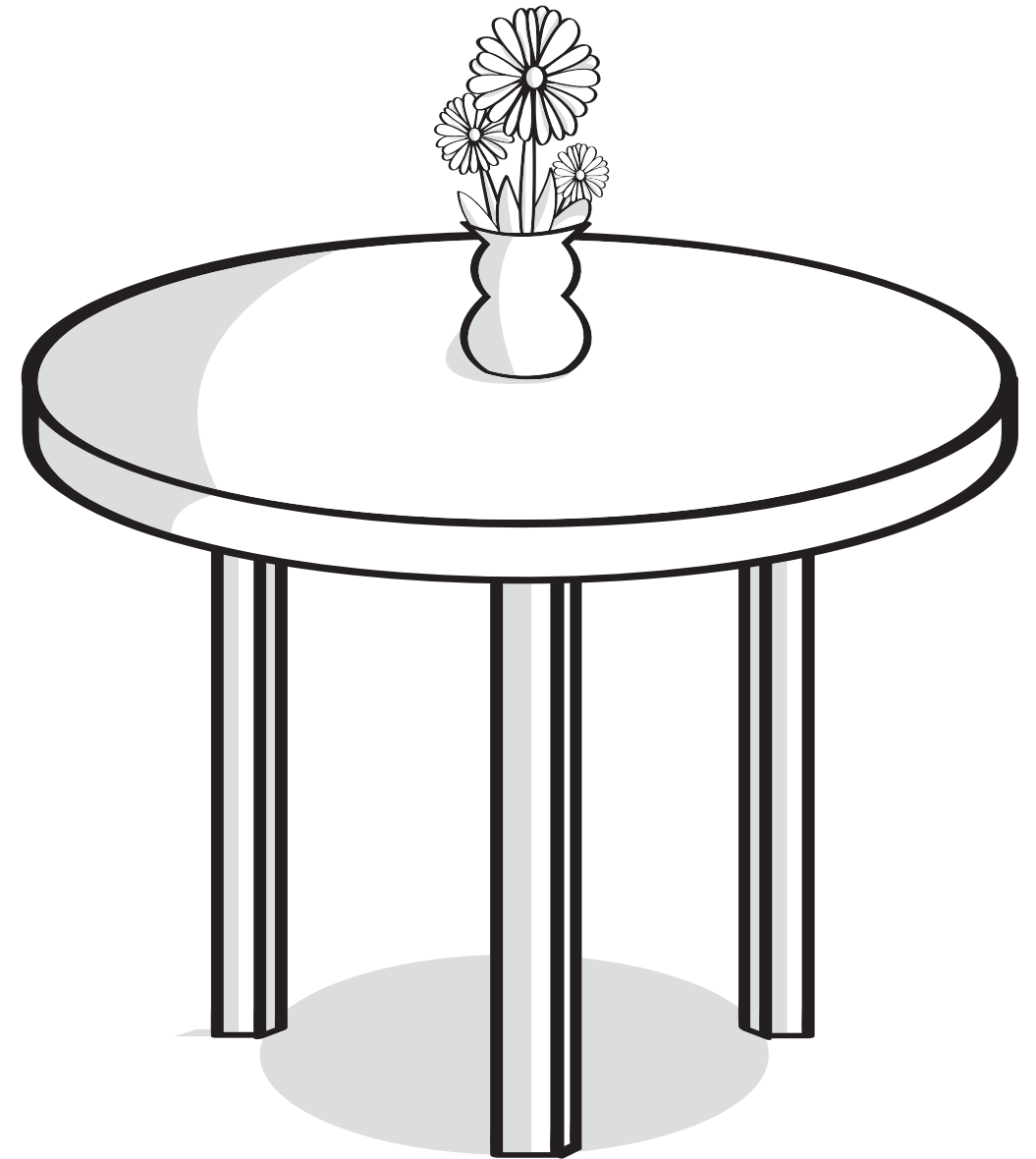
PICTURE  
THIS...

Our Research Team



# Research is a Core Component...

- **Focus is "why" NOT "how"**
- **Beyond feature sets**
- **Foundation to our design approaches + ideologies**
- **Framework to empower + provide tools needed for one to do their job more efficiently**

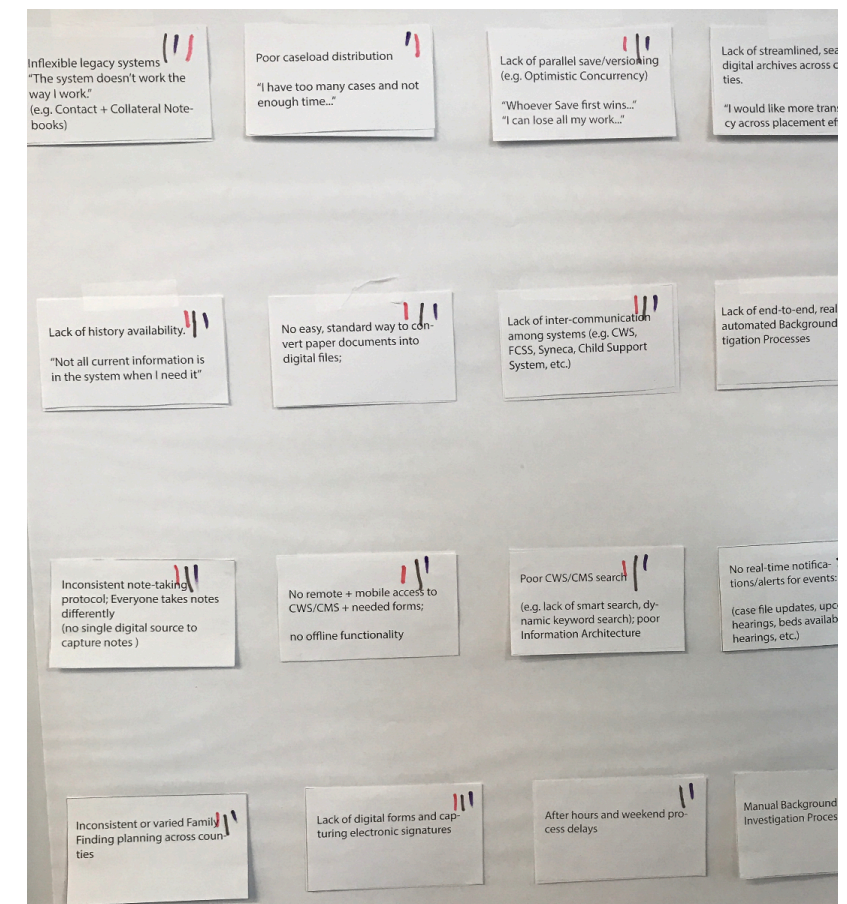
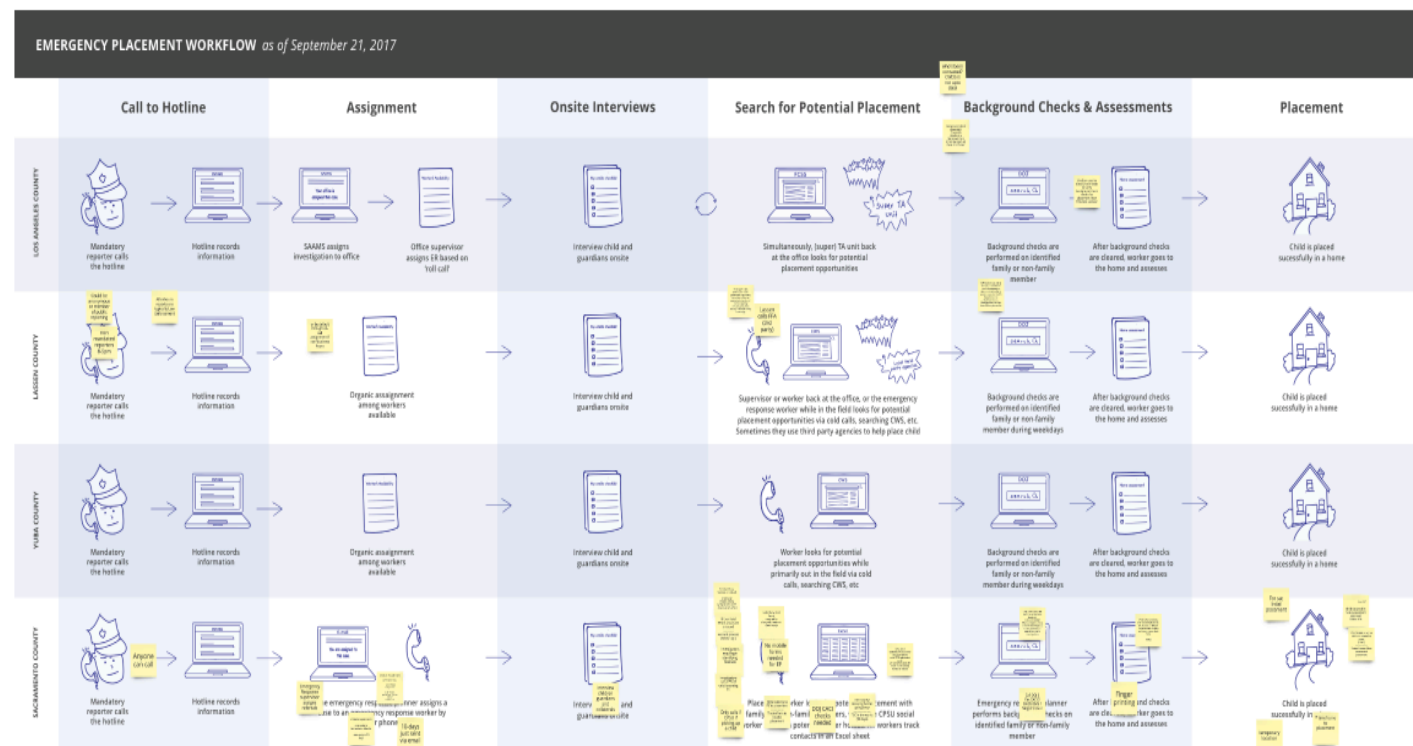


# CM Journey | Where we started...

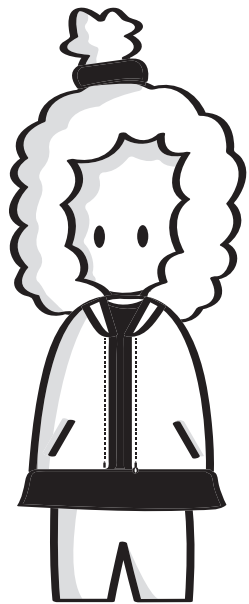
- **“All-County” Co-Design Workshop (EP + FFE)**  
Validated worker task flows, activities

- **16 Shared Challenge Themes**

Scaled to 4 core AOIs: Digital Forms, Mobile/Real-Time, Time Barriers, Finding Data

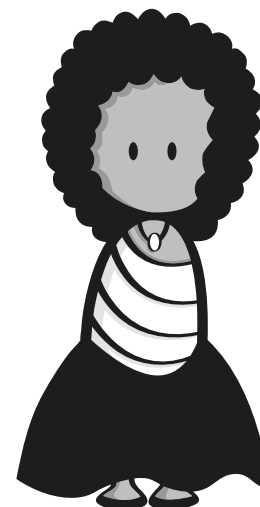
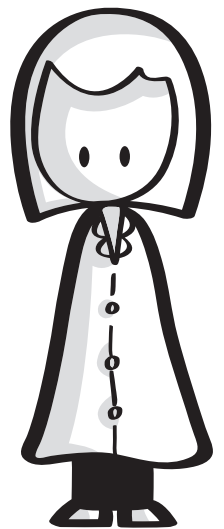


# CM Journey | Where we are...



## Research x Design Design Concept Recommendations

- Family Finding Tools & Tracking (NEW)
- Digital Submissions (ENHANCEMENT)



Design  
Concepts |  
Deeper  
Dive

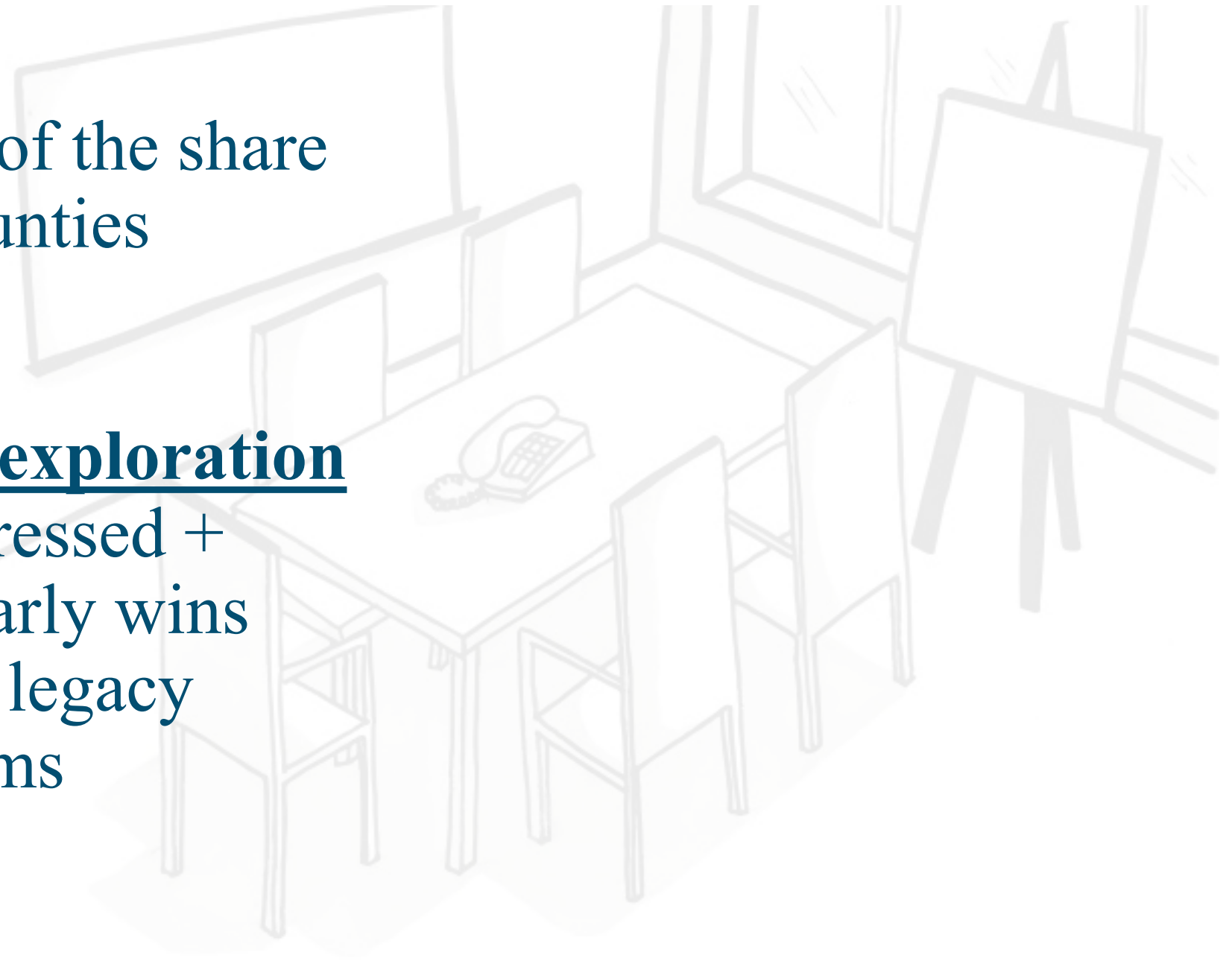
## EMERGENCY PLACEMENT | THEME DETAILS

| THEME                           | CONCEPTUAL DESIGN IDEATIONS   |
|---------------------------------|---|
| FAMILY FINDING TOOLS & TRACKING | <b>VISUALIZATION INFORMATION</b> <ul style="list-style-type: none"><li>○ MAP VIEWS</li><li>○ FAMILY RELATIONSHIP VIEWS</li><li>○ FFA SPECIFICITY</li></ul>  |
| DIGITAL SUBMISSIONS             | <b>FORM SUBMISSIONS</b> <ul style="list-style-type: none"><li>○ STATE FORMS</li><li>○ PLACEMENT CHECKLISTS</li><li>○ PLACEMENT PACKET BUILDER</li><li>○ AUTO-POPULATE DATA</li><li>○ MEDIA UPLOAD + TAGGING</li></ul><br><b>*PROVIDING RESPONSIVE FORM VIEWS FOR DESKTOP, TABLET, PHONE</b> |



# Why These Concepts... | Why now?

- Impacts over 50%+ of the share challenges across counties
- Provides key design exploration towards features expressed + targeted to provide early wins across **both** new and legacy enhancement platforms



- Touched on all 7 “How Might We...” Themes

## HOW MIGHT WE... | TARGETED INSIGHTS

The parallel ideation themes chosen touch on all 7 HMW themes & help address/provide potential solutions for within the following user derived “high-value” problem statements:

### FORM EFFICIENCY

- HMW: Minimize typing, while still being descriptive
- HMW: Deliver a digital placement packet

### DOCUMENTS

- HMW: Establish a flexible digital standard for documents
- HMW: Capture/upload in the field

### SYNCHRONIZED DATA

- HMW: Provide child specificity to FFA and county group homes digitally

### HOMES | DATA ACCESSIBILITY

- HMW: Organize and view available homes by their preference availability

### TECHNOLOGY FORMS

- HMW: Create system + reports where information is entered once

### FAMILIAR + MODERN EXPERIENCE

- HMW: Customize/personalize my experience

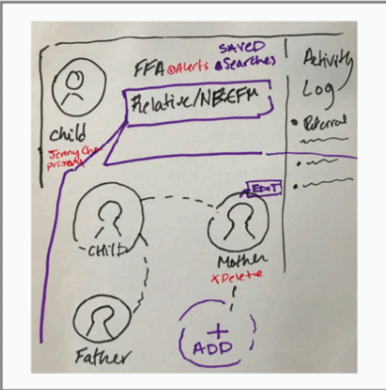
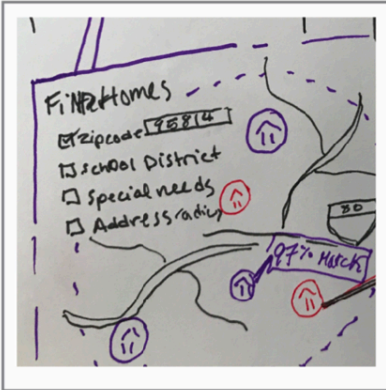
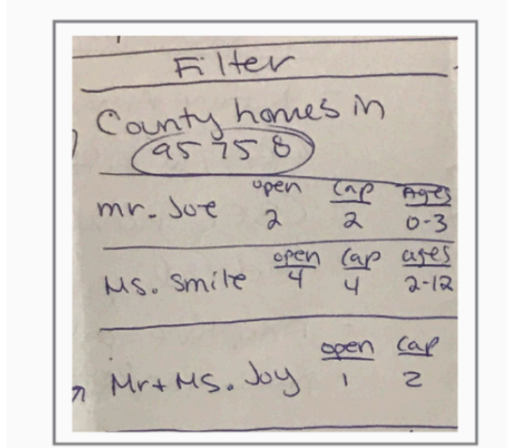
### FAMILY TREE

- HMW: Use technology to access contacts, family/relatives, NREFM in one place

\* Note: high-value was determined and weighed by users within the workshop via color-coded dots across counties

# Where Do We Go From Here...

Iterating +  
Design  
Ideation

| Ideation Themes                 | Sample Concepts   | HMW Themes  |
|---------------------------------|---|---|
| FAMILY FINDING TOOLS & TRACKING | <div></div> <p>Sally searches for relatives, can add, view recent activity and contact history, etc.</p> <div></div> <p>If no relatives available, Sally searches for available placement homes with smart filters like school district, age, special needs, etc.</p> | <ul style="list-style-type: none"><li>FAMILY TREE</li><li>SYNCHRONIZED DATA</li></ul> |
|                                 | <div></div> <p>Sally looks at results listed, or map view</p>  | <ul style="list-style-type: none"><li>FAMILY TREE</li><li>SYNCHRONIZED DATA</li></ul> |
|                                 |   |   |

# CM Journey...

